

# ZAVIG



» F3000/ F3005

Quick Installation Guide

---



# Zavio F3000/F3005 Quick Installation Guide

Please follow the installation steps below to set up F3000 / F3005 IP Camera.

Check the package contents against the list below. **See P.1**

Physical overview. **See P.1**

Install the hardware and connect all cables. **See P.3**

Microsoft OS: Use the software CD to install Intelligent IP Installer. **See P.3**

Access the IP Camera using Intelligent IP Installer. **See P.3**

Mac OS using Safari Browser. **See P.5**

Change light environment setting. **See P.6**

Change the Web Interface into your preferred language. **See P.6**

Wireless Setting (For F3005). **See P.6**

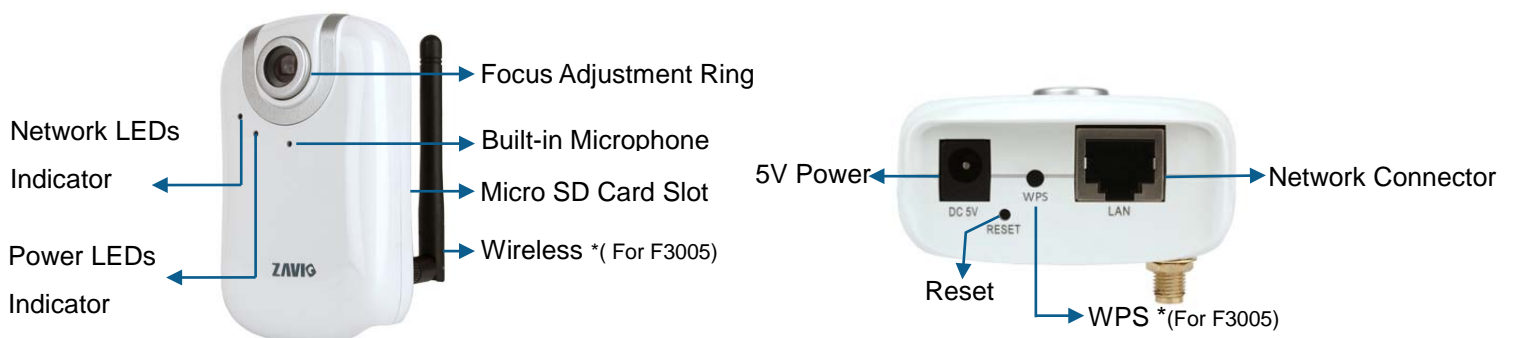
Application of IP Camera. **See P.7**

For more information, please check the User Manual available in the Software CD or you can download the latest software from <http://www.zavio.com>

## Package Contents

<b>Camera</b>	F3000 / F3005 IP Camera
<b>Quick Installation Guide</b>	Brief product information and quick installation
<b>Software CD</b>	IP Surveillance Software Intelligent IP Installer User Manuals Language Packs
<b>Mounting Bracket</b>	(3) screws, (3) plastic wall anchors, and (1) camera bracket
<b>Accessory</b>	antenna for connection of IEEE 802.11b/g/n wireless network (For F3005)
<b>Adaptor</b>	5V DC, 1A

## Physical overview



**Focus Adjustment Ring:** Adjust the focus ring to get a clear image.

**Reset:** When the device is powered, press the Reset Button to reboot the device, or hold the Reset Button for 5 seconds to set the settings back to factory default.

**WPS:** Push WPS button to configure wireless connection automatically. (For F3005)

### LED Indicator Definition

LED	Color	Indication
Network	Green	Steady green for Network link.
	Orange	Flash orange while Network activity.
Power	Red	Steady red for booting up process; Steady red 30 Seconds when WPS configure failed.
	Blue	Steady blue for booting up competition.
	Purple	Flash purple during firmware upgrading.
	Unlit	When you press reset button.

**Reset:** When the device is empowered, press the Reset Button to reboot the device, or hold the Reset Button for 10 seconds to set the settings back to factory default.

**Reset process:** Press reset button until indicator Unlit->steady red (booting up process)->steady blue (booting up competition)

**Reset to default process:** Press until indicator steady blue-> steady red(booting up process)->steady Blue (booting up competition)

## Install the hardware and connect all cables

### a. Wall mounting and Ceiling mounting

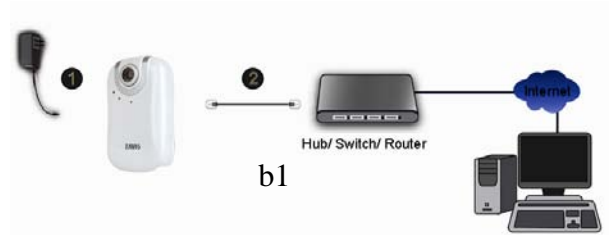
1. Use the 3 supplied screws to fix the base plate to a flat surface.
2. Loosen the lock ring to adjust the desired angle of the camera.
3. Tighten the lock ring.



### b. Connect cables and power supply

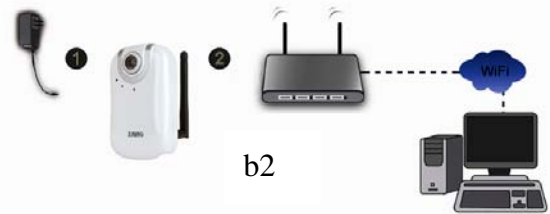
#### b1. Wire Connection

1. Connect the power adaptor to the IP Camera.
2. Use a standard RJ-45 network cable to connect the IP Camera to the Network connection



#### b2. Wireless Connection (For F3005)

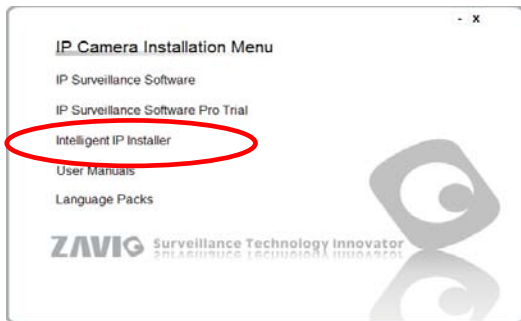
1. Connect power adaptor to the IP Camera.
2. Connect to Wi-Fi.



## Microsoft OS: Use the software CD to install Intelligent IP Installer

Power on your PC and insert the CD-ROM. The setup page will show up automatically. Please follow these steps to install the firmware.

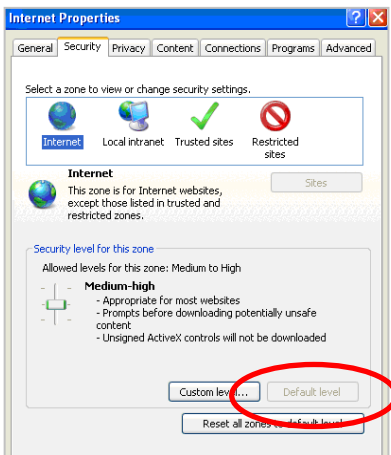
Select **“Intelligent IP Installer”** and follow the installation process to complete the installation.



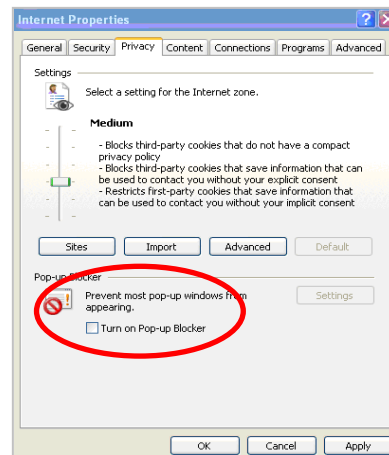
## Access the IP Camera using Intelligent IP Installer

1. Please check two settings before using Intelligent IP Installer .

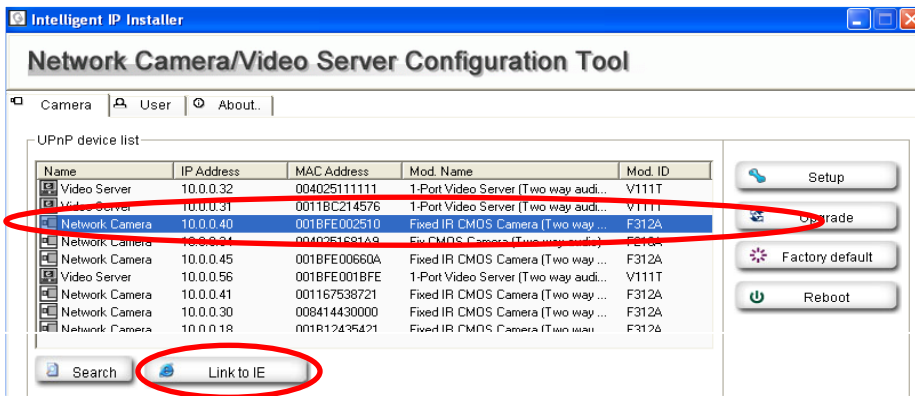
a. Browser's Internet Properties → Security  
→ **Default Level**



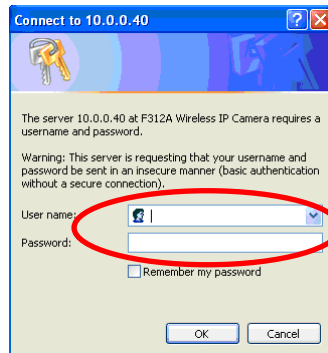
b. Browser's Internet Properties → Privacy  
→ **Uncheck Pop-up Blocker**



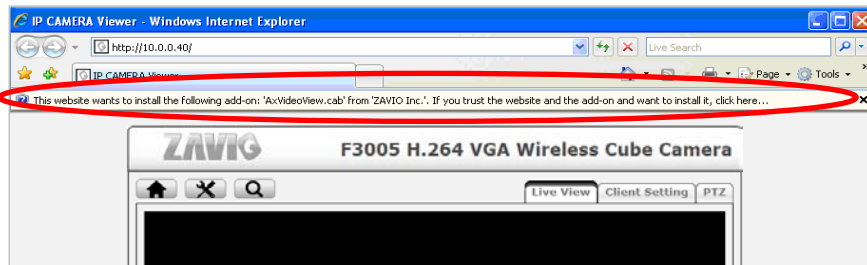
2. Click the Intelligent IP Installer Icon on your desktop. The main page will show up listing all active camera and video server devices. Select the relevant IP camera from the list and click **Link to IE**.



3. Enter your Username and Password to login to the IP Camera.  
(Default is admin / admin)



4. When accessing the IP Camera for the first time, a yellow information bar appears below the address bar: **This website wants to install the following add-on: 'AxvideoView.cab from 'Zavio Inc'.**



5. Click the information bar, and select **Install ActiveX control**.



6. Click **Install**.

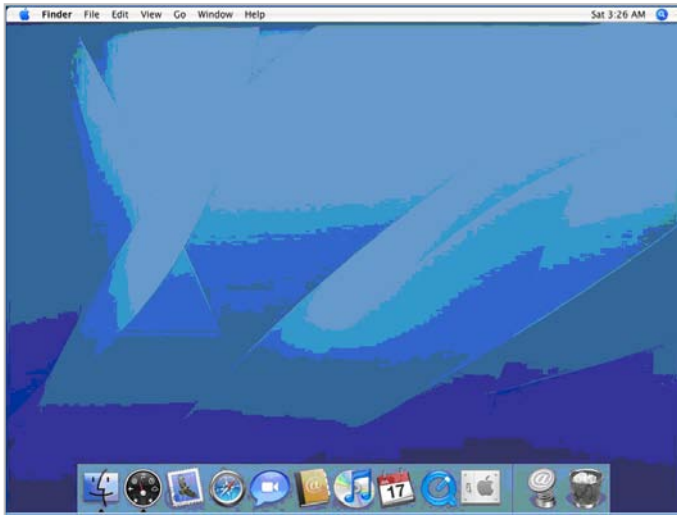


## 7. Live video displays in the centre of your web browser.

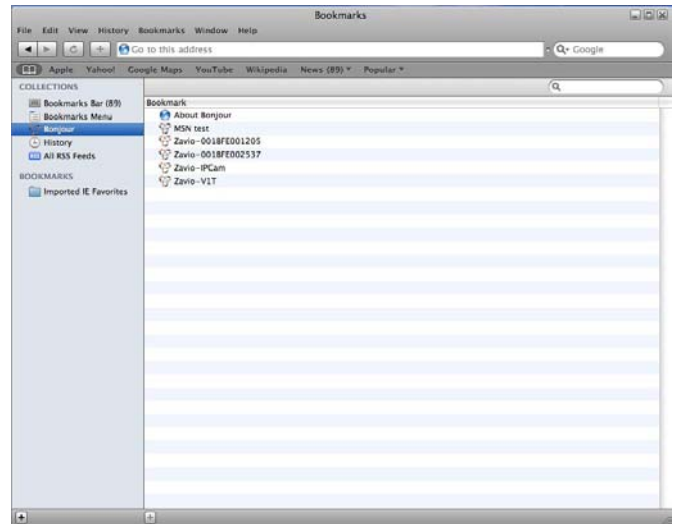


## Mac OS using Safari Browser

### 1. Select Safari icon



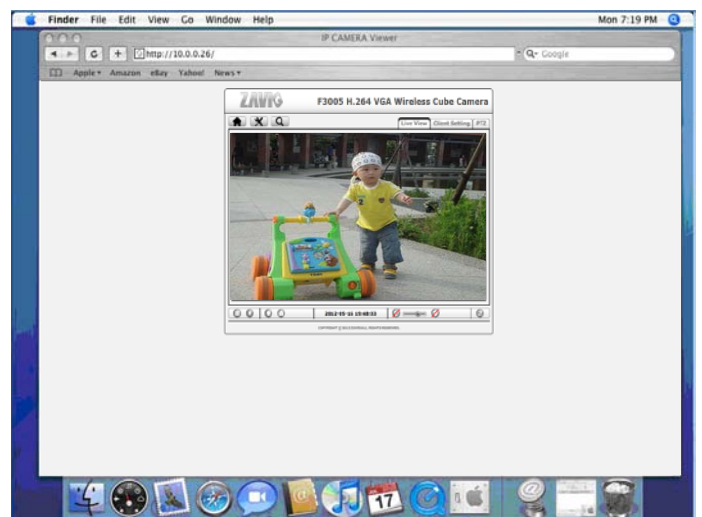
### 2. Click Bonjour function and select the camera you wish to access.



### 3. Enter name and password to login to the IP camera. (Default is admin / admin)



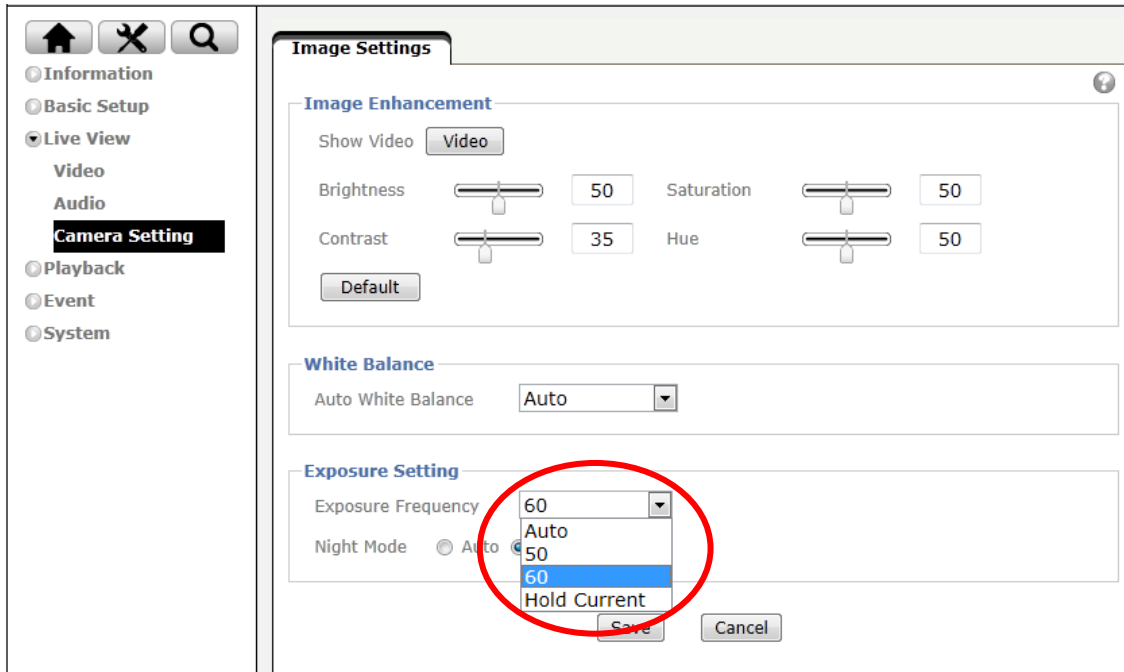
### 4. The monitor image will be displayed in your browser.



## Lighting environment setting

The default setting of lighting environment is **Auto**. However, you may also select 50 or 60 Hz upon the lighting environment of your country.

Go to “Setting > Live View > Camera Setting > Image Setting”, select the environment setting you wish.

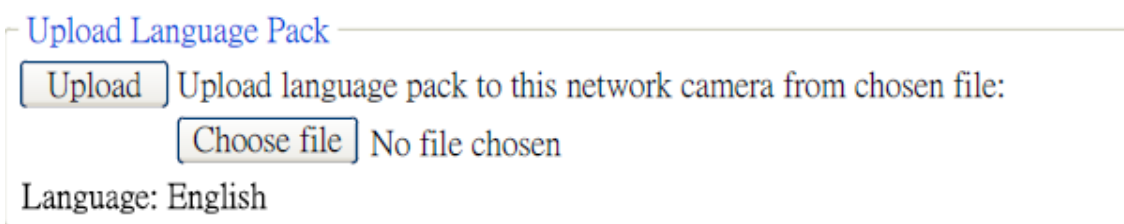


## Change the Web Interface into your preferred language

Use the settings screen to set the language of the Web Interface.

Go to “Setting > System > Maintenance”.

1. Insert Software CD into your CD-ROM.
2. Browse and select the preferred language from language pack in the Software CD and then click OK.
3. The web interface will change into your preferred language.



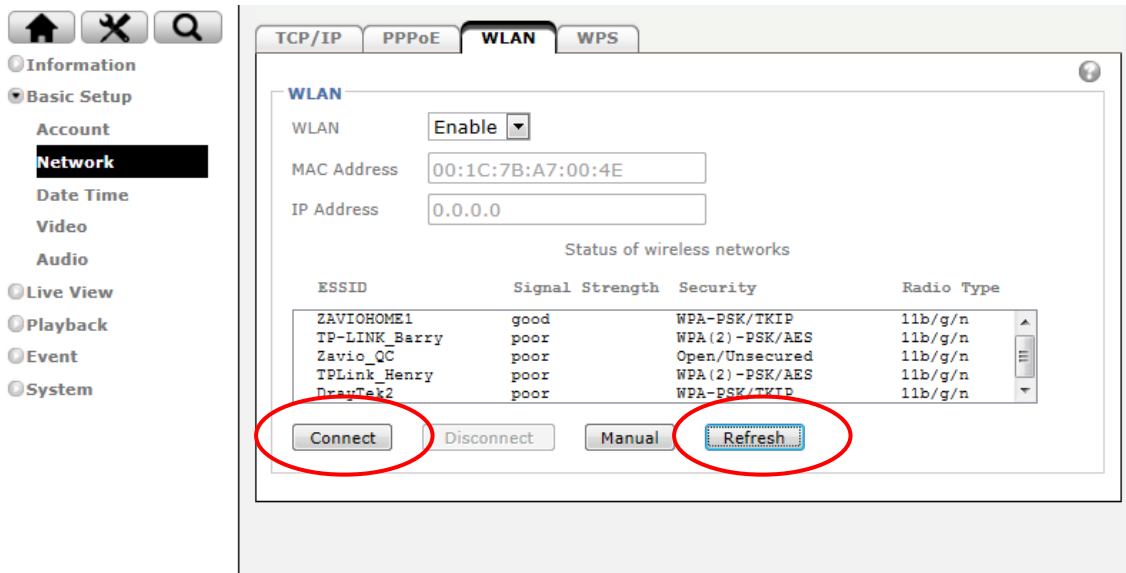
## Wireless Setting( For F3005 only)

Power the IP Camera and connect an Ethernet network cable to the IP Camera’s LAN port. Using Intelligent IP Installer and entering the camera’s setting page.

Please go to “Setting > System > Network > WLAN”, set the wireless option to “Enable”

1. Click Refresh and choose the AP you wish to connect and click Connect.
2. Enter the password within the **Active transmit key** field if required.
3. Choose the option of Obtain an IP address automatically (DHCP) and Obtain DNS server address automatically.
4. Click “Save” to apply settings. The **Wireless IP address** appears in the **IP address** field.





**Note:** The wireless private IP address can be found in Intelligent IP Installer.

## Application of IP Camera

# Memo

.....

.....

.....

.....

.....

.....

.....

.....

.....

.....

.....

.....

.....

.....

.....

.....

.....

.....

.....

.....

.....

.....

.....

.....

.....

.....

.....





